



REFINERE

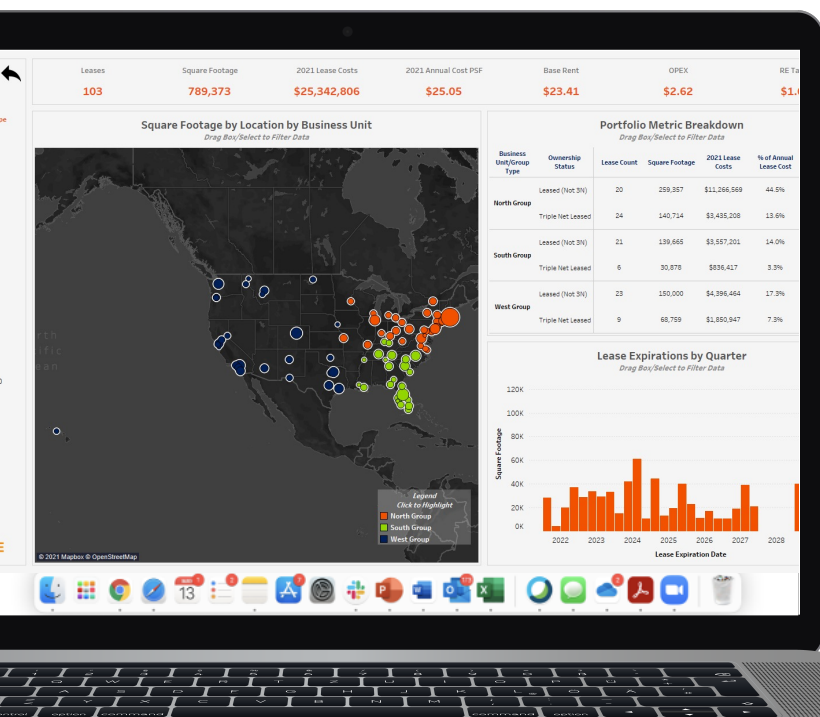
PORTFOLIO MANAGER MODULE

SEE THE BIG PICTURE

Get a single, supervisory view and wider context of your entire real estate portfolio at your fingertips by consolidating and visualizing critical data points from disparate business systems.

The RefineRE Portfolio Manager brings together the standard real estate portfolio data you rely on every day, tracking and analyzing your most critical data points including transactions, portfolio trends and key dates.

PORTFOLIO MANAGER



WHAT IT DOES

Instead of deciphering data from cluttered spreadsheets and disparate business systems, you'll be able to see the data combined —giving you better filtering and more actionable information.

- Track key initiatives and visualize progress made on specific objectives
- Easily manage the dynamic dashboard environment, emphasizing lease expirations, obligations, and other key metrics
- Export to CSV, PDF, or Microsoft Office for presentations and additional analysis

BUSINESS BENEFITS

Portfolio Manager gives you the 30,000-foot view you need to do more portfolio-wide planning—instead of spending time gathering data from different departments and business systems.

- Stay ahead of portfolio trends
- Manage all transaction data from a single view
- Never miss a critical lease date
- Quickly and easily share views and analytics with team members
- Visualize transaction management info
- Track historical portfolio KPIs over time as you upload new data

469.501.5751

info@refinere.com
www.refinere.com